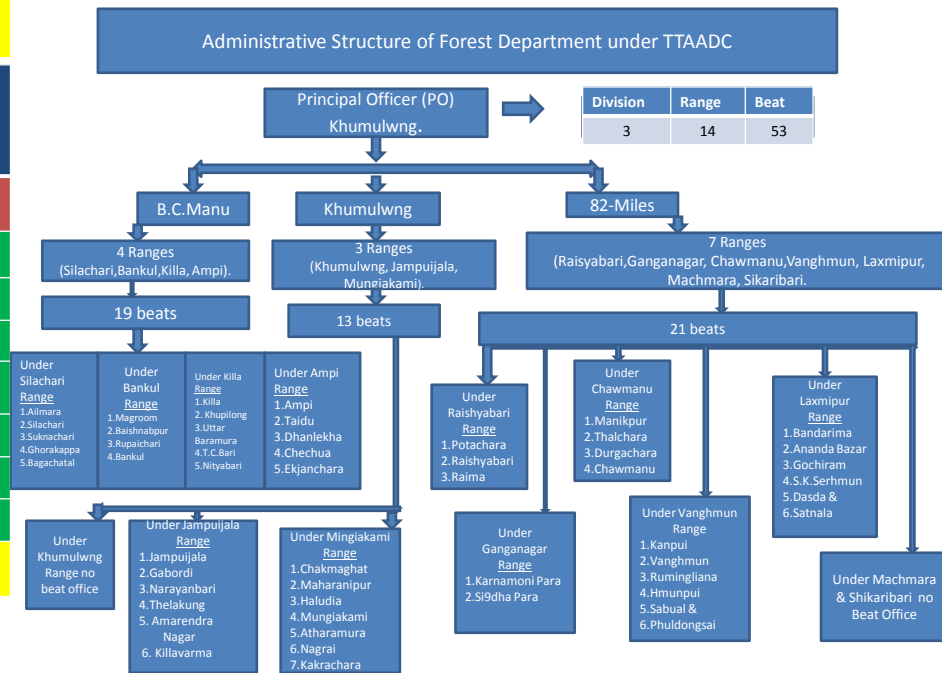


Forest Area in TTAADC:

Forest Type	Area in Sq. Km.	
	State	TTAADC
Reserve Forest (RF)	3588.18	3129.57
Proposed Reserve Forest (PRF)	587.63	114.29
Protected Forest (PF)	1.60	0.75
Unclassified Govt.Forest (UGF)	2116.87	1966.63
Total Forest Area	6294.28	5211.24
% of Forest Area	62.94 %	73.06 %
Geographical Area	10491.69	7132.56

TTAADC constitutes 82.79% of the State total Forest Area.



AT A GRANCE

Status of Total Plantation in TTAADC area during 2012-13 to 2019-20

Sl. No	Division	Plantation							
		Road side (Km)	Agro-forestry (Ha)	River bank (Km).	Constn of Check Dam (Nos).	Bam boo (Ha)	Broom grass (Ha)	Teak/ Gamar (Ha).	Misc./ Ornamental (Nos/ha).
1	Khumulwng	10.9	527.1	6	10	127	8.5	23	20,439
2	B.C.Manu.	6	932.92	0	136	336.6	5	30	10
3	82-Miles.	0	487	0	20	20	3	00	00
	Total	16.9 KM	1947.02 ha	6 km	166 nos	483.6 ha	16.5 ha	53 ha	20,439 nos /10 ha

1. STATUS OF ALL TYPES OF PLANTATION CREATED SINCE (2012-13 to 2019-20 up to Feb'2020)

Sl. No.	Year	DFO Khumulwng				DFO B.C.Manu				DFO 82-miles.				R E M arks		
		Scheme	Tar(in ha/no)	Achiv (in ha/ no)	Species	Schem e	Tar (in ha)	Achiv (in ha)	Species	Scheme	Tar (in ha)	Achiv (in ha)	species			
1	2	3	4	5	6	7	8	9	10	11	12	13	14	15		
1	2012-13	Nil	Nil	Nil	Nil	T. fund	16	16	Bamboo plntn.	T.fund	10 ha	10 ha	Bamboo			
2	2013-14	T. fund	20	20	Bamboo plntn.		138.6	138,6			Ornmtl	MGN REGA	Nil		Nil	Nil
3	2014-15		400	400	Ornamental		40	40					A.Forestry.		MGN REGA	50
4	2015-16		20	20	A/Forestry.	5	5	Ornmtl	MGN REGA	42						42
		360	360	Ornmtl	6	6	R.Side Plant.									
5	2016-17	MGNREGA	1359	1359	Ornmtl	65	65	A.Forestry.	MGNREGA	20	20	A.Nut/Banaana				
			7 ha	7 ha	Misc.	30	30	Teak & Gamai		75	75	A.Nut/yongchak				
			2.9 ha	2.9 ha	R/side plntn.	5	5	Ornmtl		20	20					
						2	2	Avenue plntn.								
						30	30	Bam.Plnt								
						21	21	Misc.								
						10	10	Jai,Barak,Rupai, Mritinga.								
6	2017-18	MGN REGA	105	105	Bamboo Plantn.	MGNREGA	1	1	Ban Elachi	T.fund	3	3	Broom grass			
			215	215	A.Forstry		5	5	Broom grass							
			40	23	Teak		25	05								
		T.fund	10	8.5	Broom grass											
		T.fund	6	6	R.Bank plant.											
		T.fund	6	6	R.side plant.											
7	2018-19	T.fund	18,314	18,314	Ornmtl	MGNREGA	154.32	154.32	A.forestry	T.fund	6 ha	6 ha	Agro-Forestry			
			2	2	R.side plant.		5	5	Misc							
		4	4	A.forstry	25		19	Gandhaki	MGN REGA	95 ha	95 ha	Bamboo				
					20		15	Large Cardamon								
					10		0	Gandhaki		10 ha	10 ha					
					7		0	Teak/Gamai								
					70		70	Bam.plantn								
					45		18	Misc								
8	2019-20	MGN REGA				MGNREGA	14	12	Jai,Barak,Rupai, Mritinga bamb.	T.fund	33	33	Agro-forestry			
			210	197.6	A.forestry.		140	140	A.forestry.							
			4.5	4.5	Ornmtl		30	30	ANR misc							
		2	2	Bamboo plant.	45		45	Rupai & Mritinga								
						3	3	Bankul,Pongamia,Chalta, Kathal		20	20					

Abstract of all types of plantation for the year 2012-13 to 2019-20

(Area in hac/km/Nos)etc.

Name of Divn.	2012-13	2013-14	2014-15	2015-16	2016-17	2017-18	2018-19	2019-20	Total
1	2	3	4	5	6	7	8	9	10
DFO Khumulwng	Nil	20 ha	400 nos Ornml.	20 ha 360 nos Ornmtl.	37 ha 1359 nos Ornmtl.	200 ha/12 km(Rd side Plantn)18,320 nos Ornmtl.	6 ha	244.1 ha	527.1 ha/12 km (Rd.side Plantn) 20,439 nos Ornmtl.
DFO 82-Miles	Nil	Nil	Nil	50 ha	135 ha	3 ha	136 ha	163 ha	487 ha
DFO BCManu	16 ha	138.6 ha	40 ha	53 ha	163 ha	11 ha	293.32 ha	218 ha	932.92 ha
Total	16 ha	158.6 ha	40 ha/ 400 nos Ornmtl.	123 ha/ 360 nos ornmtl.	335 ha/ 1359 nos ornmtl.	214 ha/12 km (Rd. Side plantn) 18,320 nos	435.32 ha	625.1 ha	1947.02ha/12km(Rd. Side plantn.) 20,439 nos Ornmtl.

---*---

STATUS OF CHECK DAM (BY ADC ONLY) for 8(eight) years from **2012-13 to 2020-21**

Division	Range	Name of Scheme	Year	Target (in nos)	Achievement (in nos)	Linkages with Fishery Deptt.	No of family involved	Remarks
----------	-------	----------------	------	--------------------	-------------------------	---------------------------------	--------------------------	---------

1	2	3	4	5	6	7	8	9
DFO 82-Miles	Chawmanu	MGNREGA	2012-13 to 2016-17	Nil	Nil	Nil	Nil	
			2017-18	4	4	No	14	
			2018-19	Nil	Nil	On progress		
			2019-20 to 2020-21	7	7		35	
	Laxmipur	MGNREGA	2012-13 to 2013-14	Nil	Nil			
			2014-15	1	1		5	
			2018-19	3	3	On progress	20	
	Rashyabari	Nil	2012-13 to 2016-17	Nil	Nil			
			2017-18	1	1	No	3	
			2018-19	Nil	Nil	Nil	12	
			2019-20	4	4	On progress		
			Total		20 nos	20 nos		89 families
DFO Khumulwng	Mungiakami	MGNREGA	2019-20	5 Nos.	3 Nos.	--	--	
			2020-21	4 nos				
	Jampuijala		2016-17	4 Nos.	2 Nos.	--	20 families	
			2017-18		2 Nos.	--		Spill over 2016-17
			2020-21	4 nos				
	Khumulwng		2016-17	3 Nos.	3 Nos.			
		Total		20 nos	10 nos		20 families	
	Bankul /Ampi /Killa /Silachari		2012-13 to 2014-15	Nil				

DFO B.C.MANU	Ampil	MGNREGA	2015-16	2	2	0	32	SHG	
	Silachari			2	2	0	2	SHG	
	Bankul		2016-17	40	17	0	17	Individual	
	Killa			09	09	09	35	Individual	
	Bankul		2017-18	12	12	0	12	Individual	
	Ampi			26	26	0	26	SHG	
	Silachari			12	12	0	12	Spill over of 16-17	
			2018-19	Nil	0	0	0		
	Bankul	MGNREGA	2019-20	10	10	0	10	Individual	
	Ampi			21	21	0	21	SHG	
	Killa			15	15	15	15	Individual-8, SHG-7.	
	Silachari			10	10	0	10		
	Bankul	MGNREGA	2020-21	14	Work order will be issued on due time 65 nos Administrative approval not yet received.				
	Ampi			21					
	Killa			18					
	Silachari			12					
		Total		224	136	24	192		
		Grand total		264	166	24	301		